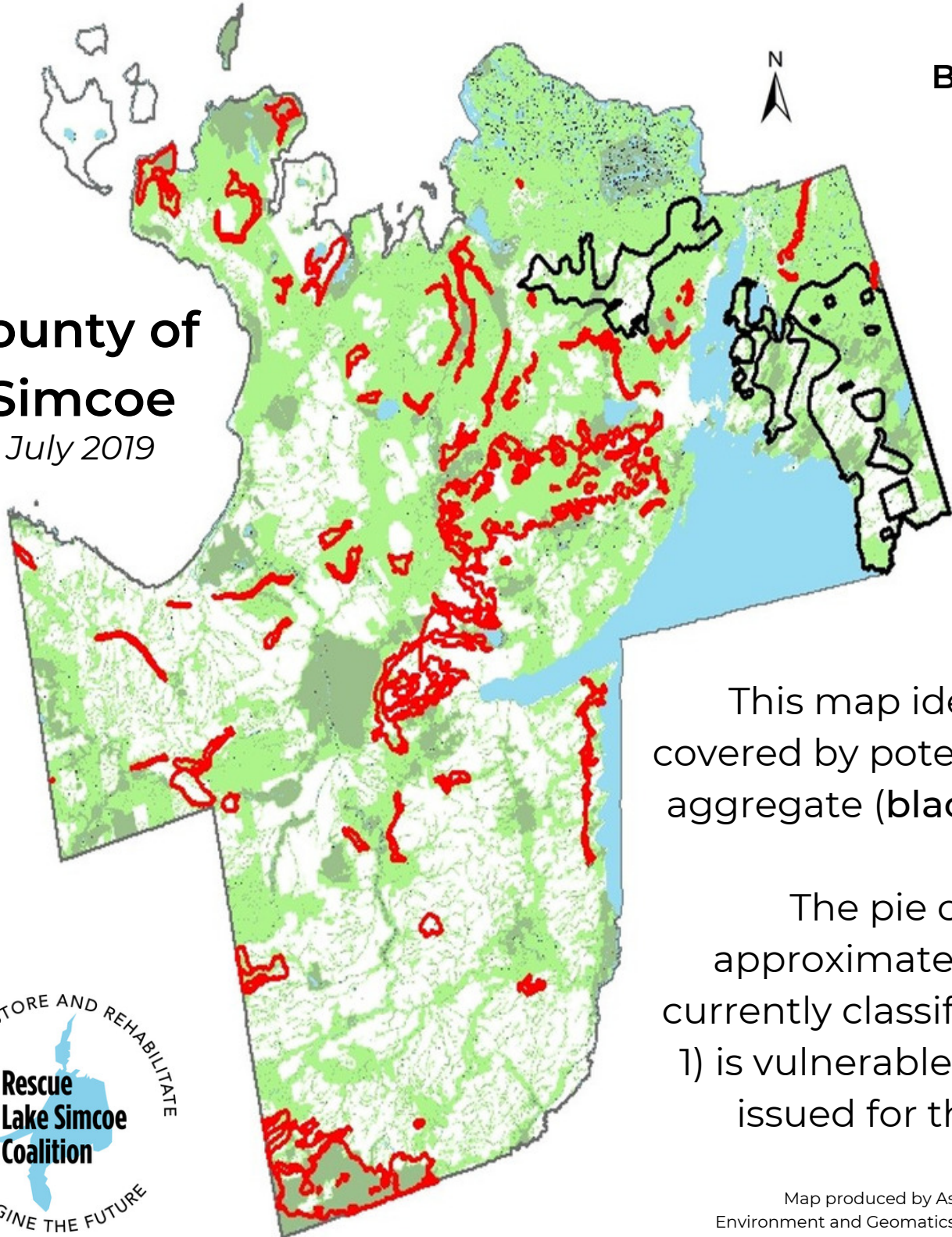
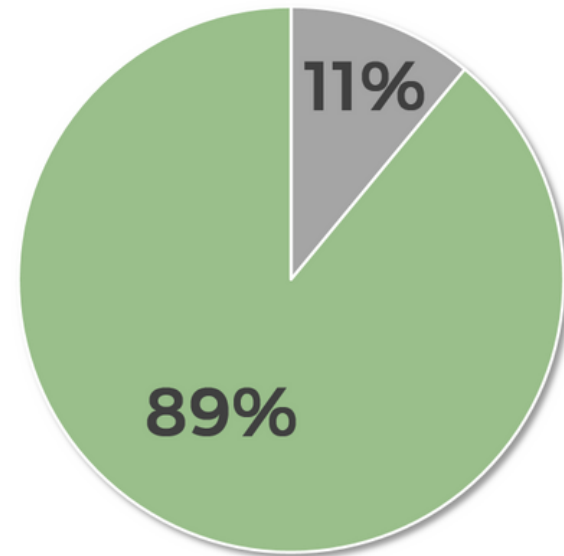




County of Simcoe

July 2019



Best Protected Lands Breakdown



-  Vulnerable to Aggregate Extraction
-  Not Vulnerable to Aggregate Extraction

This map identifies the total land area covered by potential sites for the extraction of aggregate (black) and sand and gravel (red).

The pie chart above shows that approximately 11% of the total land area currently classified as “Best Protected” (Level 1) is vulnerable to destruction if permits are issued for these extractive industries.

